

Pulsar Product Datasheet

Pendant | Surface mounted | Recessed | Track mounted

Product Data

Warranty	5 years
Applications	Interior
Certification(s)	UKCA, CE, RoHS

Physical Data

Colour Finish	Matte White (RAL9016) Matte Black (RAL9005)
Construction Material	Aluminium
Diffuser Type	PMMA as standard Honeycomb louvre - TP(a) as optional (not available in pendant)
Reflector	Gun metal (pendant only) black or white (all other)
Unit Weight (Kg)	0.78 (Pendant) 0.35 (All other)

Electrical Data

Voltage Range	AC220-240V
Power Factor	>0.90
Inrush Current	<20A
Running Current	DC250mA
Protection Class IEC	Class II (Recessed) Class I (All other)

Performance Data

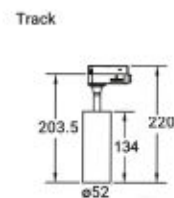
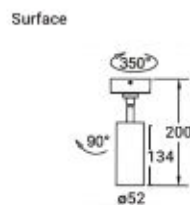
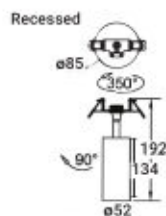
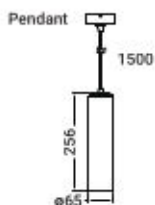
Efficacy	~90-100 Lm/W
Operating Temperature	-20°C to +45°C
Beam Angle	15° 24° (standard) 38° 55°
Operating Hours	>50000
CRI	>90 Ra
IP Rating	IP20
IK Rating	IK07
Macadam Ellipse	≤3 sdcM
L70 B50	100,000 hours
L80 B50	90,000 hours
L90 B50	42,000 hours
LEDs	Single Bin Bridgelux

Customisable beam, black or white body and reflector.
One luminaire for a consistent style throughout.



Luminaire Fixing	Kelvin	Wattage	Lumens
Pendant	4000K	10W	900
Pendant	3000K	10W	895
Recessed	3000K	12W	1202
Recessed	4000K	12W	1206
Surface mounted	3000K	12W	1202
Surface mounted	4000K	12W	1206
Track mounted	3000K	12W	1202
Track mounted	4000K	12W	1206

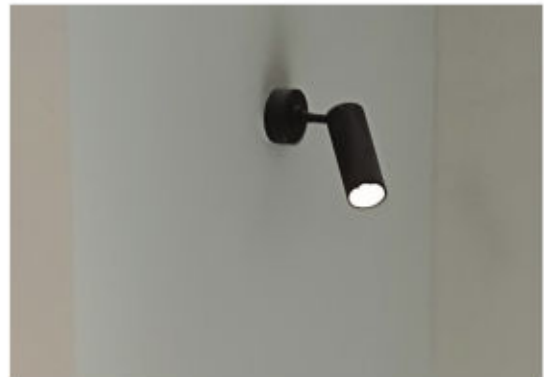
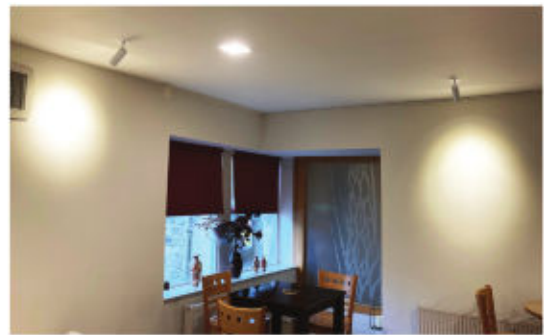
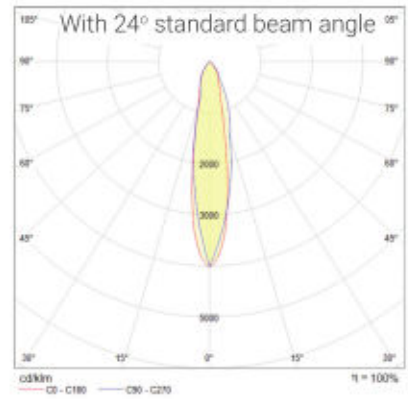
Dimensions (mm)



Pulsar Family



Light Distribution:



Pulsar Family

